

Futech Engineering Trading Co., Ltd.
科健工程貿易有限公司

High Pressure Water Pump HWP-160A



Futech Engineering Trading Co., Ltd.

Workshop: 123C Tin Ha Road, Hung Shui Kiu, Yuen Long, N.T

Tel: 852-31181665 Fax: 852-31186557

E-mail: info@futechengineering.com Website: www.futechengineering.com

Contents

Introduction	3
Technical Specifications	4
List of Parts	5
Circuit Diagram of Control	6
Operation Regulations	7
Maintenance Regulations	8



Futech Engineering Trading Co., Ltd.

Workshop: 123C Tin Ha Road, Hung Shui Kiu, Yuen Long, N.T

Tel: 852-31181665 Fax: 852-31186557

E-mail: info@futechengineering.com Website: www.futechengineering.com

Introduction

Grout pump HWP-160A is a fully hydraulic control pump. It is designed to give a high output flow rate up to 175 L/min, with a relatively low reciprocating speed. This is achieved by using a delivery cylinder with a long working stroke or, in another word, a large volume delivery cylinder. It reduces the number of cycles required to finish a certain task and therefore reduces the number of wears and tears in moving parts. Thus, product life is prolonged and maintenance cost is lowered.

Moreover, hydraulic control is used instead of mechanical control. The absence of mechanical control reduces the number of uncertainties, making this pump more reliable and able to operate at a relatively higher or lower speed.



Futech Engineering Trading Co., Ltd.

Workshop: 123C Tin Ha Road, Hung Shui Kiu, Yuen Long, N.T

Tel: 852-31181665 Fax: 852-31186557

E-mail: info@futechengineering.com Website: www.futechengineering.com

Technical Specifications

Grout Pump

Max. Output Flow	160 L/min
Max. Output Pressure	50 bar
Displacement per Cycle	5 L
Speed	35 cycle/min
Weight	~0.2 ton
Dimension	1.0m (L) x 0.8m (W) x 0.8m (H)

Power Pack (optional)

Electric Motor	
Power	15kW
Input Voltage	3 Phase 380V
Switch	Star-Delta Starter
Hydraulic Pump	
Pump Type	Variable displacement piston pump
Pump Control	Pressure-Flow Control
Max. Hydraulic Pressure	280 bar
Weight	~0.5 ton
Dimension	0.8m (L) x 0.8m (W) x 1.2m (H)

Notes:

1. All data presented are based on water as the medium
2. Specifications are subject to modify. Please refer to the updated version



Futech Engineering Trading Co., Ltd.

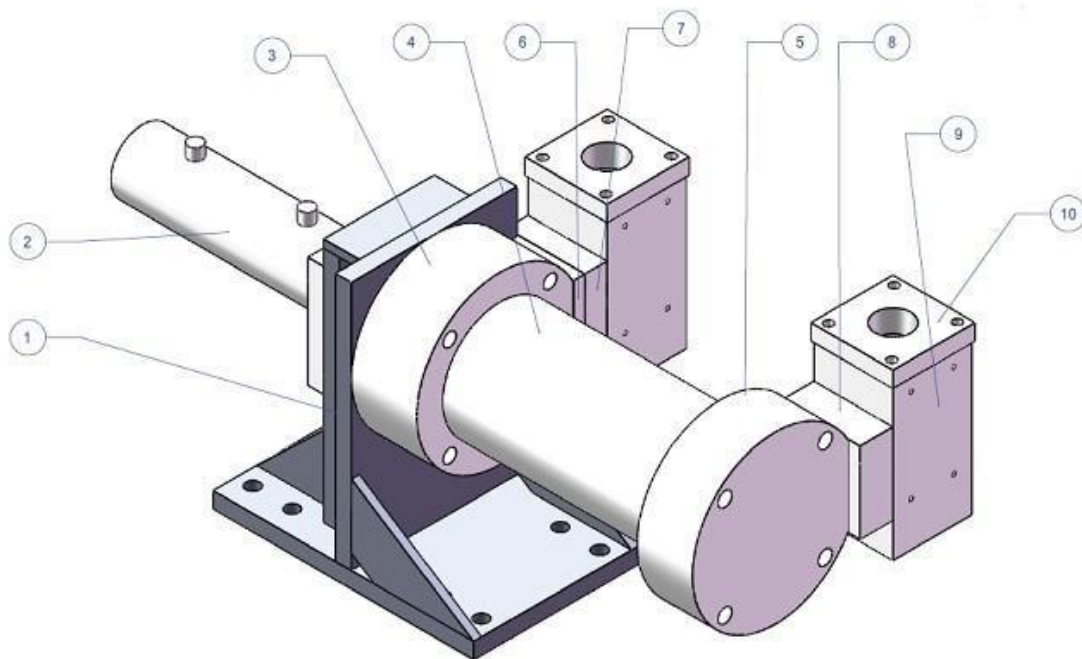
Workshop: 123C Tin Ha Road, Hung Shui Kiu, Yuen Long, N.T

Tel: 852-31181665 Fax: 852-31186557

E-mail: info@futechengineering.com Website: www.futechengineering.com

List of Parts

項目號 (Item no.)	說明 (Description)	數量 (Quantity)
1	支撐座 (T Support)	1
2	油缸 (Hydraulic Cylinder)	1
3	輸送缸前法蘭 (Front Flange)	1
4	輸送缸 (Delivery Tube)	1
5	輸送缸後法蘭 (Rear Flange)	1
6	安裝法蘭 (Connecting Flange 1)	1
7	安裝法蘭01 (Connecting Flange 2)	1
8	安裝法蘭03 (Connecting Flange 3)	1
9	出入口閥 (In/Out Valve Block)	2
10	出口蓋板 (Outlet Cover)	2
11	油缸密封件 (Sealing Kit for Delivery Cylinder)	1
12	輸送缸密封件 (Sealing Kit for Hydraulic Cylinder)	1



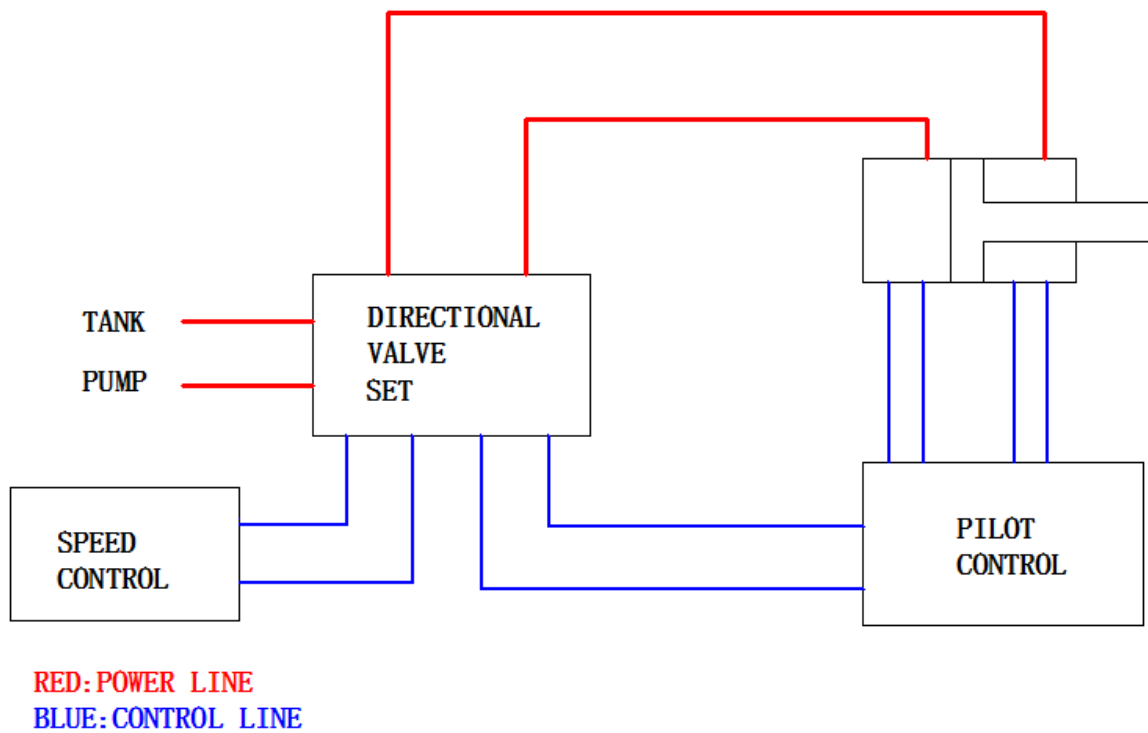
Futech Engineering Trading Co., Ltd.

Workshop: 123C Tin Ha Road, Hung Shui Kiu, Yuen Long, N.T

Tel: 852-31181665 Fax: 852-31186557

E-mail: info@futechengineering.com Website: www.futechengineering.com

Circuit Diagram of Control



Futech Engineering Trading Co., Ltd.

Workshop: 123C Tin Ha Road, Hung Shui Kiu, Yuen Long, N.T

Tel: 852-31181665 Fax: 852-31186557

E-mail: info@futechengineering.com Website: www.futechengineering.com

Operation Regulations

Only persons who have read this manual and have been trained accordingly are allowed to work with the pump.

Keep this operation manual ready to hand on the working site.

Before start working, check that the machine has no externally visible damage and faults. Advise the person in charge immediately of visible damage or faults.

Check the hydraulic oil level in the oil tank every day.

The motor should only be started when the pump is under zero loading.

The motor should be started about 30 seconds before the startup of the pump.

Hoses must be replaced whenever damage through the outer layer to the insert or crack of the hose material is found.



Futech Engineering Trading Co., Ltd.

Workshop: 123C Tin Ha Road, Hung Shui Kiu, Yuen Long, N.T

Tel: 852-31181665 Fax: 852-31186557

E-mail: info@futechengineering.com Website: www.futechengineering.com

Maintenance Regulations

Run the pump with water for about 3 minutes to remove interior residues and clean the pump exterior with water after use.

Replace the return filter element and check the electrical system for every 500 hours of operation.

Replace hydraulic oil every 2000 hours of operation.



Futech Engineering Trading Co., Ltd.

Workshop: 123C Tin Ha Road, Hung Shui Kiu, Yuen Long, N.T

Tel: 852-31181665 Fax: 852-31186557

E-mail: info@futechengineering.com Website: www.futechengineering.com