

# Grout Pump HGP-300T



**Futech Engineering Trading Co., Ltd.**

Workshop: 123C Tin Ha Road, Hung Shui Kiu, Yuen Long, N.T.

Tel: 852-31181665 Fax: 852-31186557

E-mail: [info@futechengineering.com](mailto:info@futechengineering.com)

Website: [www.futechengineering.com](http://www.futechengineering.com)

# Contents

<b>Introduction</b>	-----	<b>3</b>
<b>Technical Specifications</b>	-----	<b>4</b>
<b>List of Parts</b>	-----	<b>5</b>
<b>Circuit Diagram of Control</b>	-----	<b>7</b>
<b>Operation Regulations</b>	-----	<b>8</b>
<b>Maintenance Regulations</b>	-----	<b>9</b>



**Futech Engineering Trading Co., Ltd.**

Workshop: 123C Tin Ha Road, Hung Shui Kiu, Yuen Long, N.T.

Tel: 852-31181665 Fax: 852-31186557

E-mail: [info@futechengineering.com](mailto:info@futechengineering.com)

Website: [www.futechengineering.com](http://www.futechengineering.com)

# Introduction

Grout pump 300T is a new fully hydraulic control pump. The pump changes direction and speed through the energy generated by hydraulic control. Its maximum output flow is rated up to 300L/min, with a relatively low reciprocating speed. This is supported by using two delivery cylinders with long-lived pistons, namely a large-volume delivery cylinder. It reduces the number of cycles required to finish a certain task so as to reduce the number of wears and tears in moving parts. Thus, product life is prolonged and the maintenance cost is lowered.

Moreover, hydraulic control is reasonable to take the place of mechanical control. The advantage of hydraulic control is to decrease the number of uncertainties, making this pump more reliable and stable to operate.



**Futech Engineering Trading Co., Ltd.**

Workshop: 123C Tin Ha Road, Hung Shui Kiu, Yuen Long, N.T.

Tel: 852-31181665 Fax: 852-31186557

E-mail: [info@futechengineering.com](mailto:info@futechengineering.com)

Website: [www.futechengineering.com](http://www.futechengineering.com)

# Technical Specifications

## Grout Pump

Max. Output Speed	300 L/min
Max. Output Pressure	50 bar
Displacement per Cycle	7.25L
Weight	~0.5ton

## Power Pack

Hydraulic Pump	
Pump Type	Variable displacement piston pump
Pump Control	Pressure-Flow Control
Max. Hydraulic Pressure	280 bar
Electric Motor	
Power	22kW
Input Voltage	3 Phase 380V
Switch	Star-Delta Starter
Hydraulic Valve	Relief valve, speed control valve and directional valve
Weight	~0.8 ton
Dimension	2m (L) x 0.8m (W) x 1.3m (H)

### Notes:

1. All data presented are based on water as the medium
2. Specifications are subject to modify. Please refer to updated version



**Futech Engineering Trading Co., Ltd.**

Workshop: 123C Tin Ha Road, Hung Shui Kiu, Yuen Long, N.T.

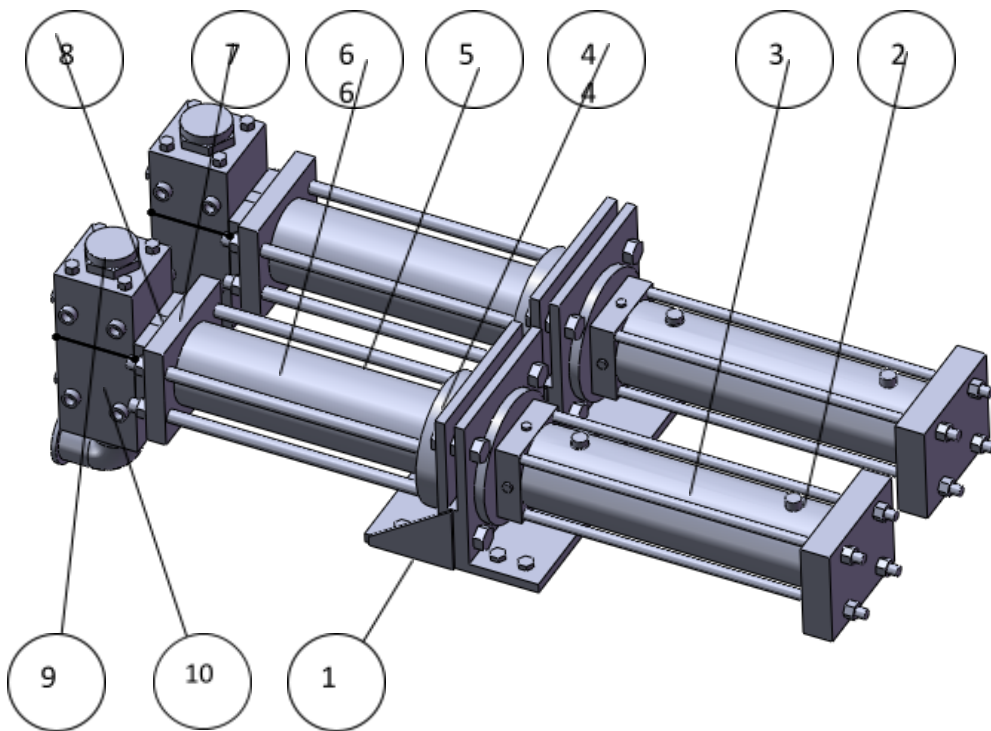
Tel: 852-31181665 Fax: 852-31186557

E-mail: [info@futechengineering.com](mailto:info@futechengineering.com)

Website: [www.futechengineering.com](http://www.futechengineering.com)

# List of Parts

項目號 (Item no.)	說明 (Description)	數量 (Quantity)
1	支撐座 (T Support)	2
2	油缸拉杆 (Hydraulic Cylinder Rod)	8
3	油缸 (Hydraulic Cylinder)	2
4	輸送缸前法蘭 (Front Flange)	2
5	輸送缸拉杆 (Delivery Tube Rod)	8
6	輸送缸 (Delivery Tube)	2
7	輸送缸後法蘭 (Rear Flange)	2
8	安裝法蘭 (Connecting Flange )	2
9	G2'接頭 (Sealing Joint)	2
10	出入口閥 (In/Out Valve Block)	2
11	油缸密封件 (Sealing Kit for Delivery Cylinder)	2
12	輸送缸密封件 (Sealing Kit for Hydraulic Cylinder)	2



**Futech Engineering Trading Co., Ltd.**

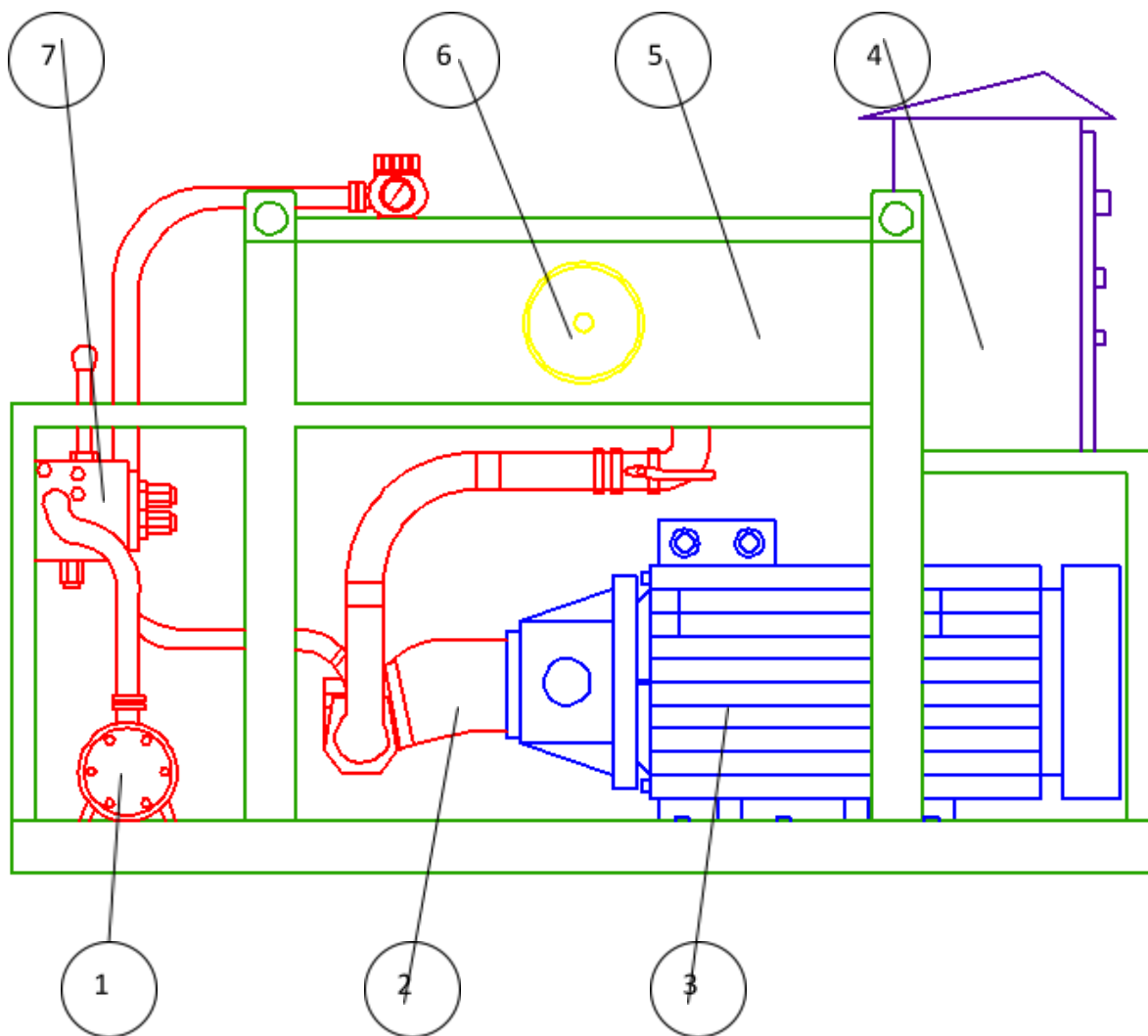
Workshop: 123C Tin Ha Road, Hung Shui Kiu, Yuen Long, N.T.

Tel: 852-31181665 Fax: 852-31186557

E-mail: [info@futechengineering.com](mailto:info@futechengineering.com)

Website: [www.futechengineering.com](http://www.futechengineering.com)

項目號 (Item no.)	說明 (Description)	數量 (Quantity)
1	冷卻器 (Cooler)	1
2	油泵 (Hydraulic Pump)	1
3	電馬達 (Electric Motor)	1
4	電箱 (Electric Box)	1
5	泵油箱 (Pump Tank)	1
6	回油過濾器 (Return Filter)	1
7	控制閥 (Control Valve)	1



**Futech Engineering Trading Co., Ltd.**

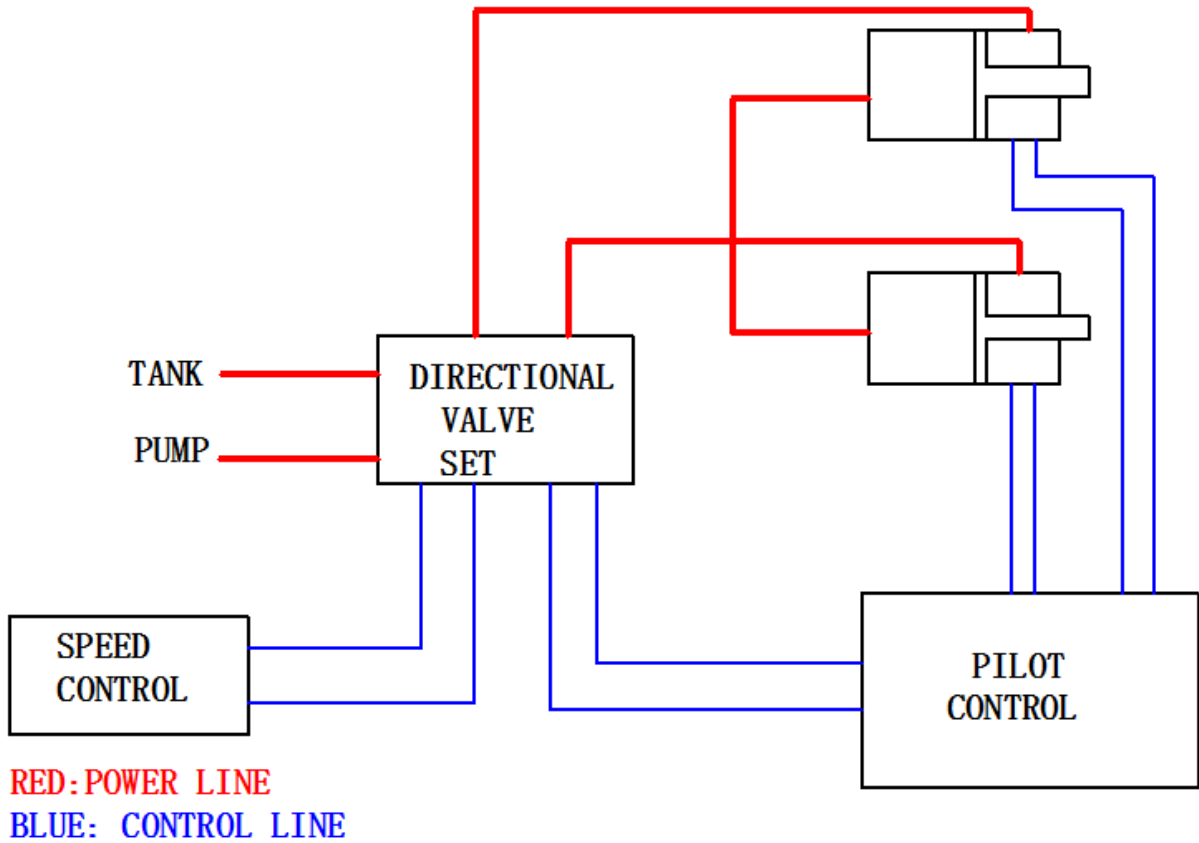
Workshop: 123C Tin Ha Road, Hung Shui Kiu, Yuen Long, N.T.

Tel: 852-31181665 Fax: 852-31186557

E-mail: [info@futechengineering.com](mailto:info@futechengineering.com)

Website: [www.futechengineering.com](http://www.futechengineering.com)

# Circuit Diagram of Control



Futech Engineering Trading Co., Ltd.

Workshop: 123C Tin Ha Road, Hung Shui Kiu, Yuen Long, N.T.

Tel: 852-31181665 Fax: 852-31186557

E-mail: [info@futechengineering.com](mailto:info@futechengineering.com)

Website: [www.futechengineering.com](http://www.futechengineering.com)

# Operation Regulations

1. Only persons who have read this manual and have been trained accordingly are allowed to work with the pump.
2. Keep this operation manual ready to hand on the working site.
3. Before starting work, check that the machine has no externally visible damage or faults. Advise the person in charge immediately of visible damage or faults.
4. Check the hydraulic oil level in the oil tank every day.
5. The motor should only be started when the pump is under zero loading.
6. The motor should be started about 30 seconds before the startup of the pump.
7. Hoses must be replaced whenever damage through the outer layer to the insert or crack of the hose material is found.



**Futech Engineering Trading Co., Ltd.**

Workshop: 123C Tin Ha Road, Hung Shui Kiu, Yuen Long, N.T.

Tel: 852-31181665 Fax: 852-31186557

E-mail: [info@futechengineering.com](mailto:info@futechengineering.com)

Website: [www.futechengineering.com](http://www.futechengineering.com)



# Maintenance Regulations

1. Run the pump with water for about 5 minutes to remove interior residues and clean the pump exterior with fresh water after each use.
2. Replace the return filter element in the oil tank and check the electrical system every 500 hours.
3. Replace hydraulic oil every 2000 hours.



**Futech Engineering Trading Co., Ltd.**

Workshop: 123C Tin Ha Road, Hung Shui Kiu, Yuen Long, N.T.

Tel: 852-31181665 Fax: 852-31186557

E-mail: [info@futechengineering.com](mailto:info@futechengineering.com)

Website: [www.futechengineering.com](http://www.futechengineering.com)